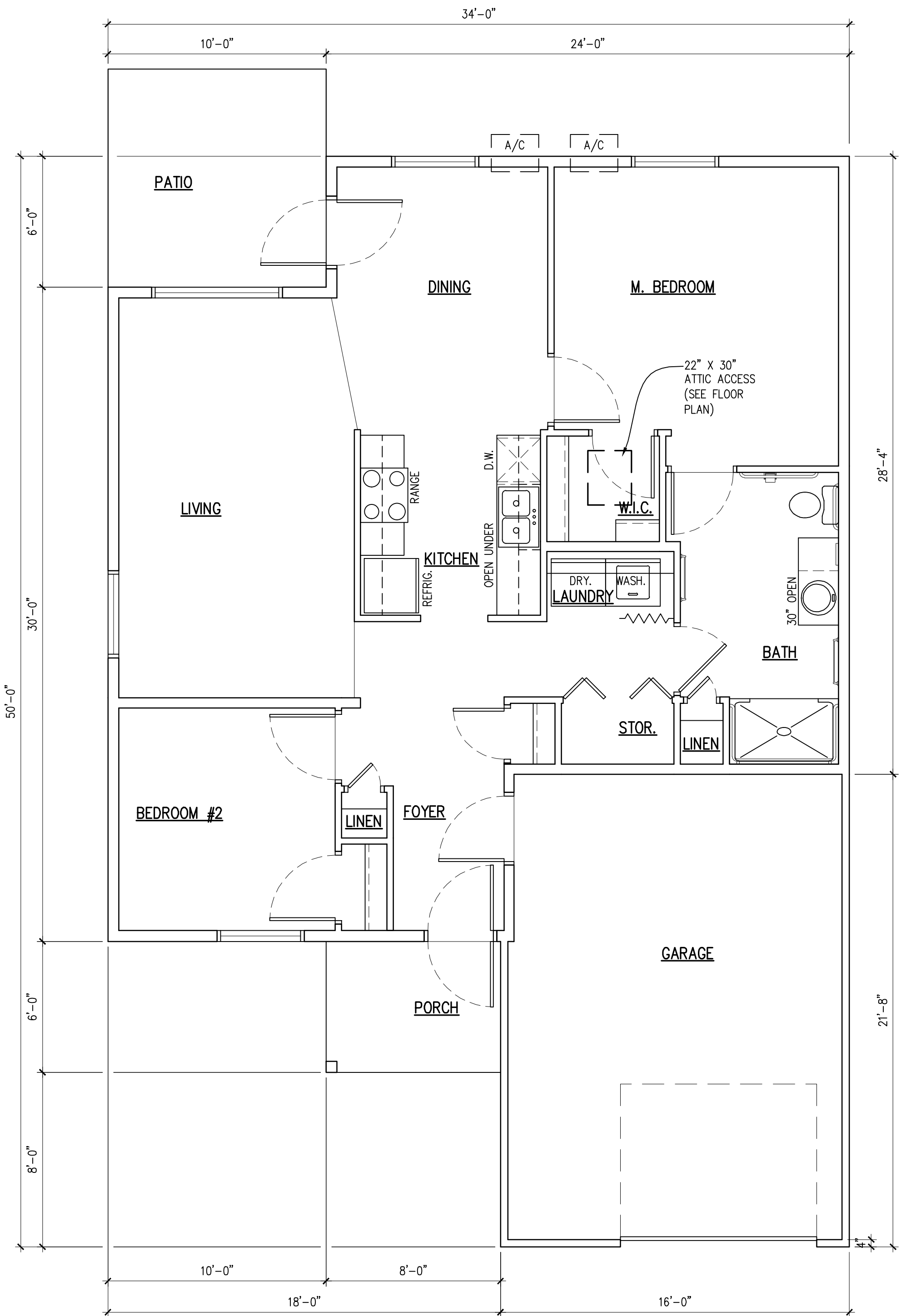


2 BEDROOM UNIT PLAN – FIRST FLOOR PLAN

1/4" = 1'-0"

579 SF + 51 SF STAIRS = 630 SF + 264 GARAGE + 84 MECH.

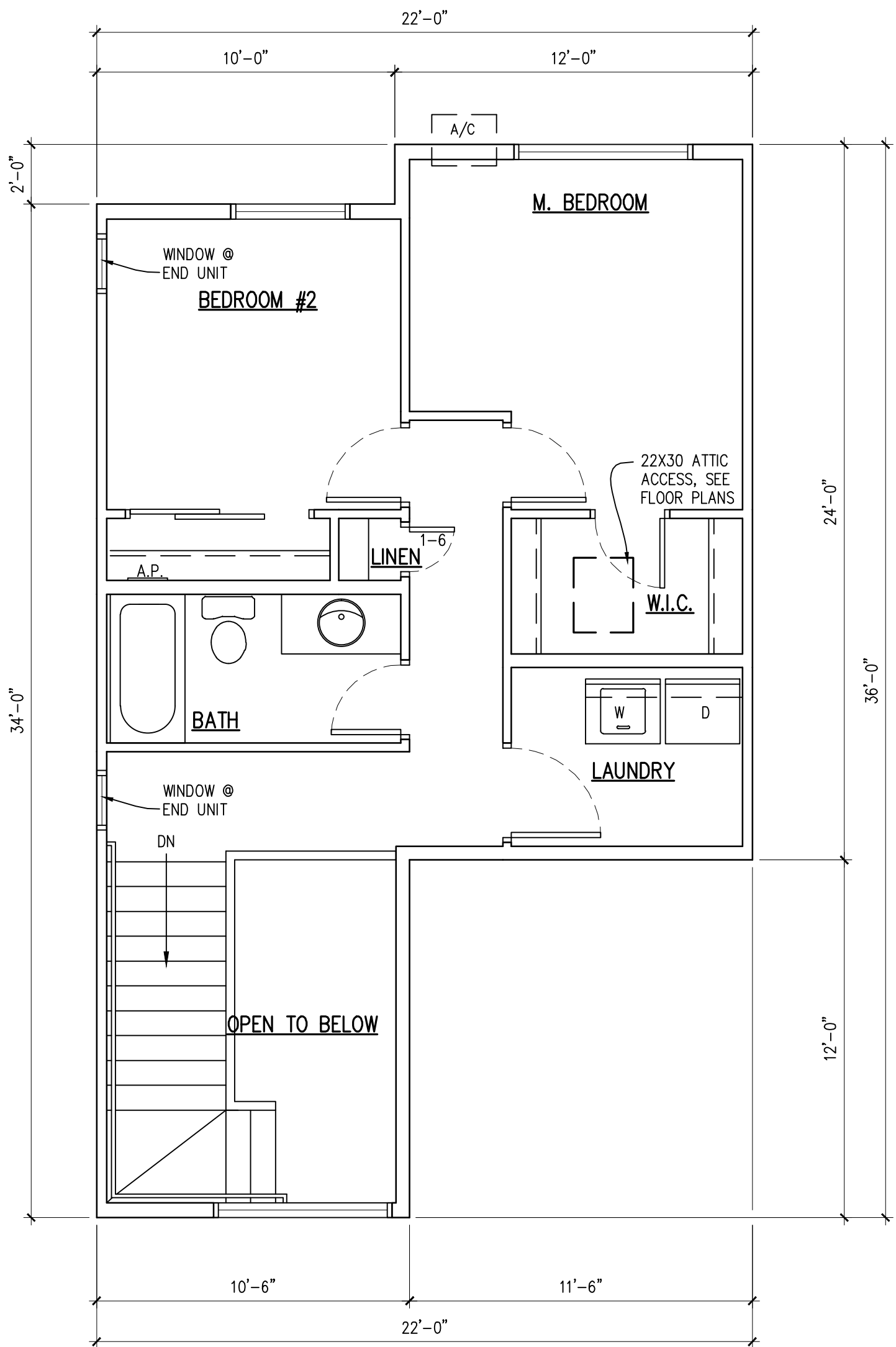


3
A503

2 BEDROOM UNIT PLAN (I.B.C. TYPE 'A') – FIRST FLOOR PLAN

1/4" = 1'-0"

1,036 SF + 352 SF GARAGE



2 BEDROOM UNIT PLAN – SECOND FLOOR PLAN

1/4" = 1'-0"

508 SF + 51 SF = 559 SF