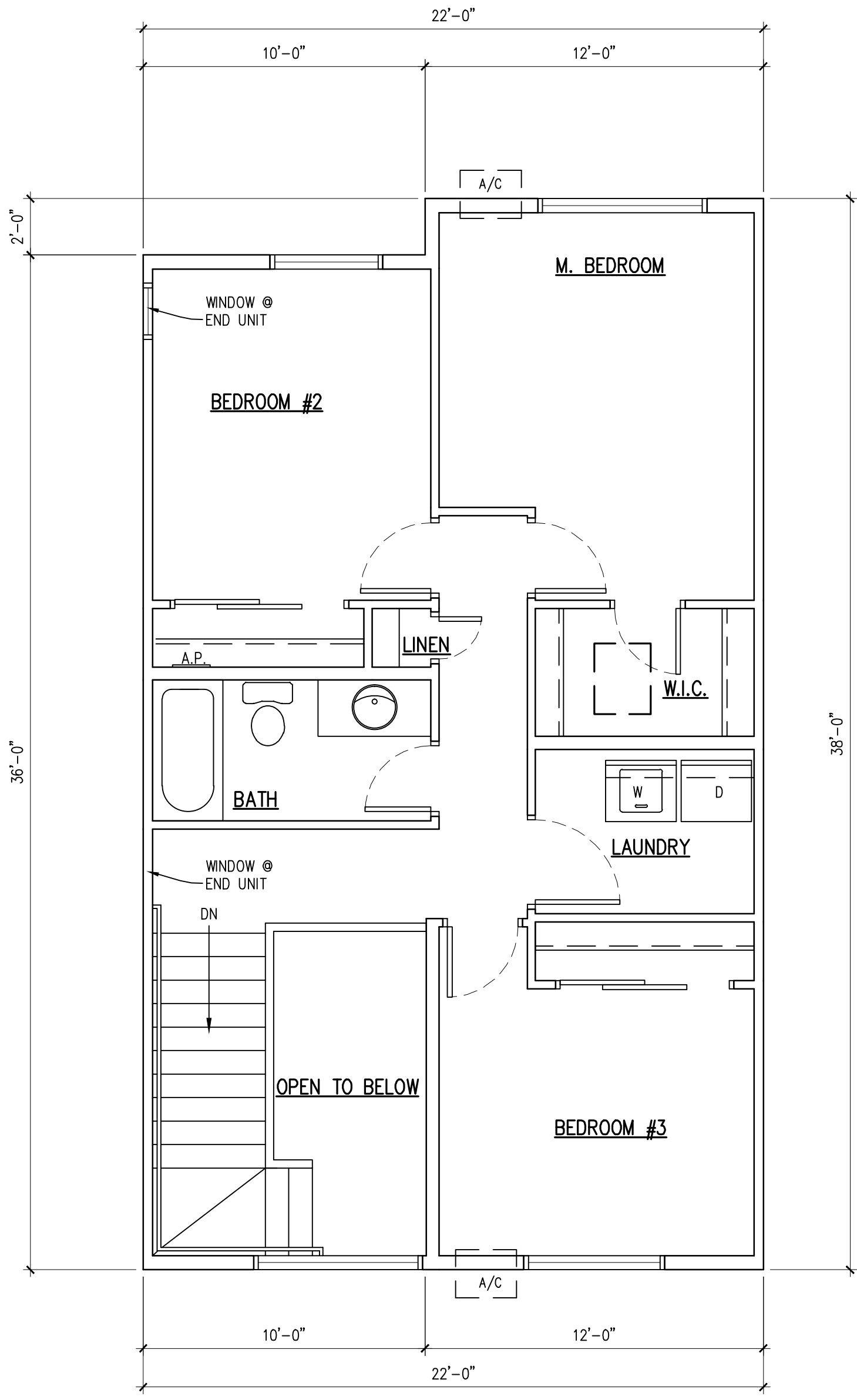


3 BEDROOM UNIT PLAN – FIRST FLOOR PLAN

1/4" = 1'-0"

623 SF + 51 SF STAIRS = 674 SF + 264 GARAGE + 84 MECH.



3 BEDROOM UNIT PLAN – SECOND FLOOR PLAN

1/4" = 1'-0"

696 SF + 51 SF = 747 SF